

Use your knife safely

Handle and place the knife correctly, and keep it in the sheath when you walk.



Use your protective equipment

Put on cut-resistant glove and chainmail when working with knives.



Keep floors clean

Rinse, scrape or wipe the floor if there is spilled blood, fat or meat.



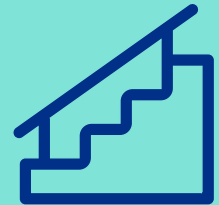
Stop and report

Report errors, dangers and concerns to your supervisor or safety rep.



Ask if you are unsure

If you don't know the safe way to do the task.



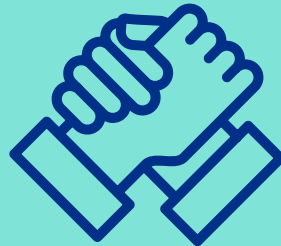
Use the handrail

When you walk on stairs.



Take the safe route

Use the marked paths instead of the fastest way.



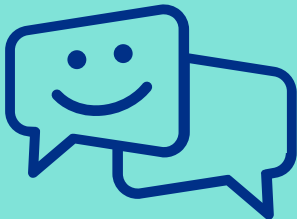
Help new colleagues

Show new colleagues how to follow the safety rules.



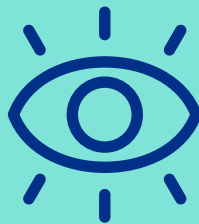
Highlight the good

Speak up when you see something done well. Demonstrate the safe solution when you see risk.



Speak kindly

If you see something unsafe, and help new colleagues build good safety habits.



Be visible

Lead by example and show that safety comes first – even when it's busy.



Look up – look down

Be aware of your surroundings and what is happening around you.

Add your own focus

Add your own focus



Adapt your communication

Use body language and signs if language or noise makes communication difficult.